



Z177.790===

Accessories

Z177.780-1



Standard electric system

B014.722 inox



AGM battery pack - 22Ah (Stainless steel)

Z523.712 inox



Fitting kit for 22Ah battery pack

B016.730 inox===



AGM battery pack - 30Ah (Stainless steel)

B210.505-T

Battery charger (100-240) 5A 24V

B151.740-1 inox

LITHIUM battery pack - 40Ah (Stainless steel)

Z524.712 inox===

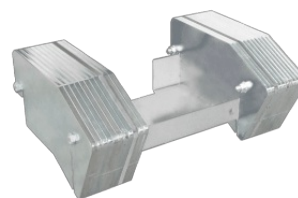
Fitting kit for 30Ah, 45Ah and Lithium battery pack

B282.020-2

Battery charger (100-240) 20A 24V (Lithium)

Z524.720 inox===

Ballasts kit 54.5 kg in stainless steel AISI316

Z524.721 inox===

Ballasts kit 94.5 kg in stainless steel AISI316

E505.710

Slow/fast switch

E550.750===

Emergency stop

E506.750===



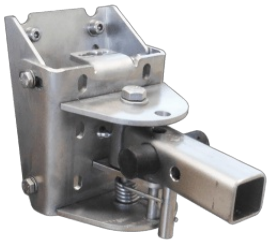
Key Pad on/off

E204.701===



Digital hour meter

ZG4.212.720 inox===



Pivoting support arm for hitches 35x35 mm

ZG3.301.720 inox===



Roll-box hitch (50x50)