



• • • the passion for moving



Z178.790

M12 STAINLESS
STEEL
AISI 316



INDUSTRIAL LOGISTICS

Zallys M12 Stainless Steel AISI 316 is an electric tug able to pull, push and steer wheeled loads up to 1.500 kg (3.306 lb) on flat ground. It is the perfect solution for multiple applications related to logistics in hospitals, food and pharmaceuticals industries, and any environment where high level of cleanliness and corrosion resistance are crucial.

M12 increases productivity and reduces manual handling, improving safety and ergonomics of workers. It can be equipped with a wide array of accessories, different kind of hitches, ballasts and removable battery packs of various capacity: 30Ah and 45Ah AGM or 40Ah Lithium.

PERFORMANCES



5,8 KM/H
(3,6 MPH)



1.500 KG
(3.306 LB)



15%





AVAILABLE BATTERY PACKS

30Ah AGM
Stainless steel
battery pack

B016.730 inox

37/45Ah AGM
Stainless steel
battery pack

B018.740 inox

40Ah Lithium
Stainless steel
battery pack

B151.740 inox



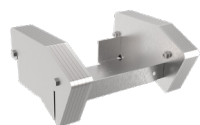
On/off keypad
E506.750



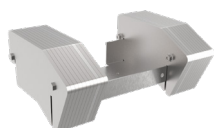
Stainless steel
LED strobe light
E564.712 inox



Stainless steel fitting kit
for battery pack
Z524.712 inox



Stainless steel
ballasts kit (54,5 kg)
Z524.720 inox



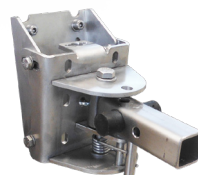
Stainless steel
ballasts kit (94,5 kg)
Z524.721 inox



Stainless steel
roll-box hitch
ZG60.026.720 inox



Stainless steel roll box hitch with
electromagnetic lock
ZG20.031.720 inox



Stainless steel
pivoting connection
ZG10.021.720 inox



Stainless steel
hook accessory
ZG10.001.700 inox



Stainless steel electric
controlled hitch
ZG20.032.721 inox



Scan this QR code
for more information



ZALLYs srl
Via Palazzina, 1 | 36030 Sarcado (VI) - ITALY
www.zallys.com | sales@zallys.com