



Z195.720-2===

Accessories

Z195.780



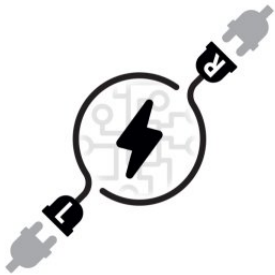
Standard electric system

Z195.781



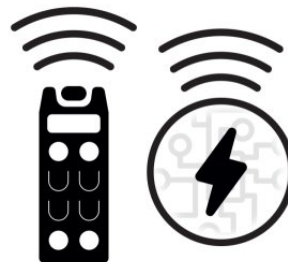
Configuration for 1 electric accessory

Z195.782



Configuration for 2 electric accessories

Z195.785



Configuration for remote control

B9024.750-3

105 / 130 Ah AGM battery pack

B210.510-T

Battery charger (100-240) 10A 24V

DR212.702-3

Turf wheels kit

DR112.702-3===

Superelastic non-tracking wheels kit

ZG1.001.721===

Mounting plate for hitches with pivoting wheel

ZG3.220.720===

Drop pin hitch Ø16 mm

ZG3.221.720===

Drop pin hitch Ø20 mm

ZG3.223.720===

Drop pin hitch Ø35 mm

ZG3.224.720===



Drop pin hitch Ø40 mm

ZG3.212.720===



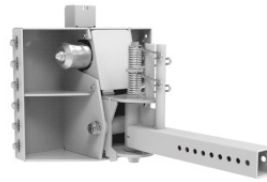
Ball/pin hitch Ø20-25

ZG3.235.720===



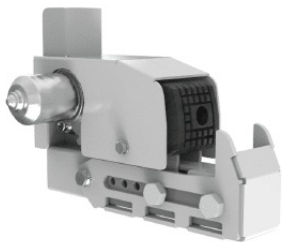
Hitch for trash bins

ZG6.601.720===



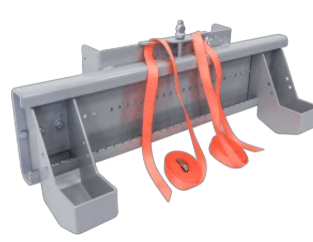
Electric controlled tilting arm

ZG3.630.725===



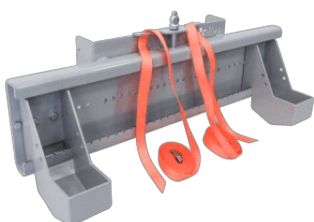
Electric clamp hitch

ZG3.250.730===



[For Ø180/200mm wheels] Hitch with adjustable width for trolleys

ZG3.250.720===



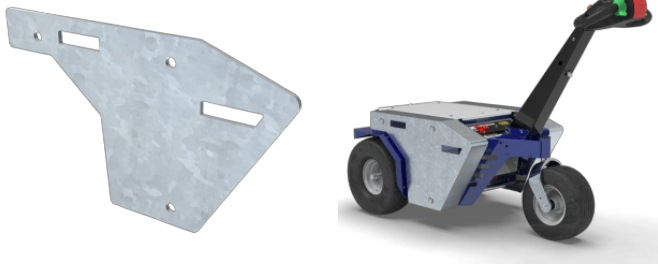
[For Ø100/125mm wheels] Hitch with adjustable width for trolleys

ZG3.301.720===



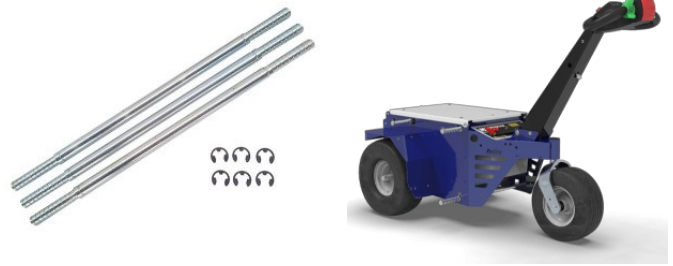
Roll box hitch (50x50)

Z195.850-1



MAX 20 pcs. - 7 kg ballast

T527.700



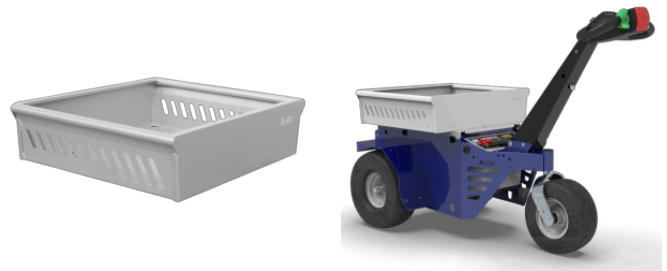
Ballasts fitting kit

A020.800===



Basket 730x730xh220 mm

A023.800===



Basket 650x550xh170 mm

Z366.710===



Guard for pivoting wheel

Z099.722===



Telescopic pole mounted flashing beacon

E550.750===



Emergency stop

E204.701===



Digital hour meter

E506.750===



Key Pad on/off